

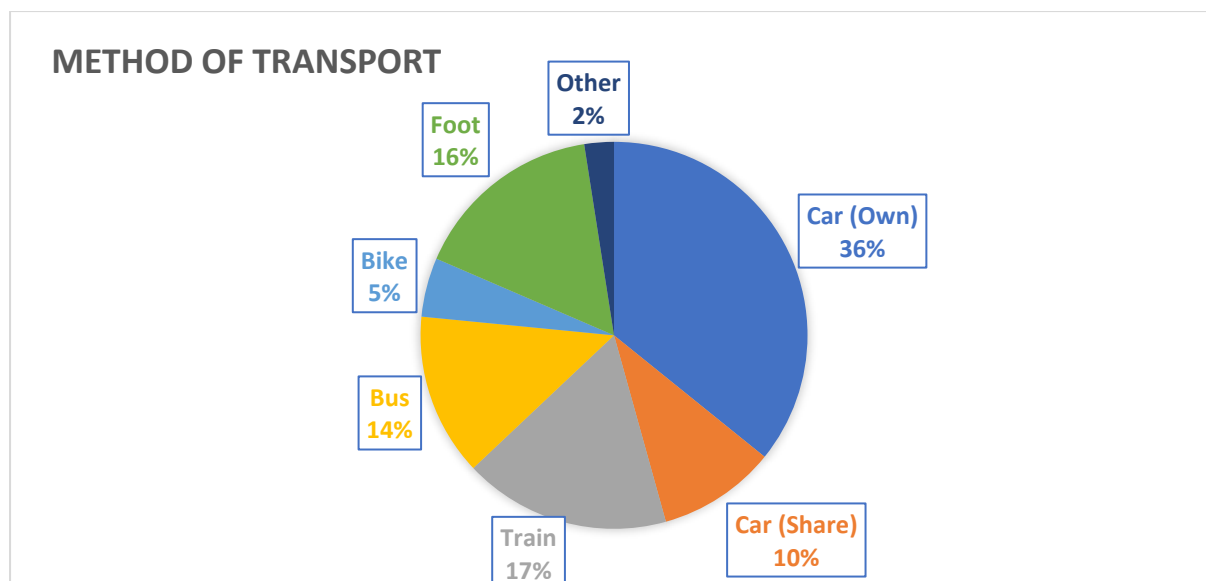
Westmill AGM Survey Results

Out of the 70 survey responses received 48% were members of both solar and wind co-operatives, with 38% solar only members, 12% wind only members and 2% unknown/guests.

Method of Transport

Chart 1 below shows the method of transport members used to attend the AGM. With 36 travelling less than 1 hour and 29 travelling between 1-2 hours. Only 5 members travelled more than 2 hours to attend the AGM. 10 members travelled by both public transport then bike or foot whilst 37 travelled by car/car share.

Chart 1



Venue

Most members voted the location, food and parking as excellent. With Sound and visibility voted as good. Please see chart 2 below.

Chart 2



There was some feedback on the size of the projector, sound systems and no hearing loop available. Visibility would be better if using a larger projector, a stage or tiered seating.

As Swindon was a popular location it would be best to survey other venues in the area in order to see if they provide more suitable facilities for our members, such as a theatre style venue with a hearing loop facility and free parking is a definite advantage.

Presentations & Content

The charts below show the member ratings for the days content. The majority of members rated the guest speakers, exhibitors and AGM content as good/excellent.

Feedback comments included that members enjoyed having guest speakers although some felt that they could have been introduced better (who is 10:10?), had more time to speak as it seemed the speakers were rushing and slides more suitable (larger fonts, less technical information). Some presenters mumbled.

The community fund information and community ideas discussion presented by the Solar co-op were a big hit. Some members enjoyed the presentation by Barbara Hammond. Members enjoyed the exhibitors but again felt that they could have been introduced better.

Some members commented that the day was long and perhaps an earlier start would be better.

Chart 3

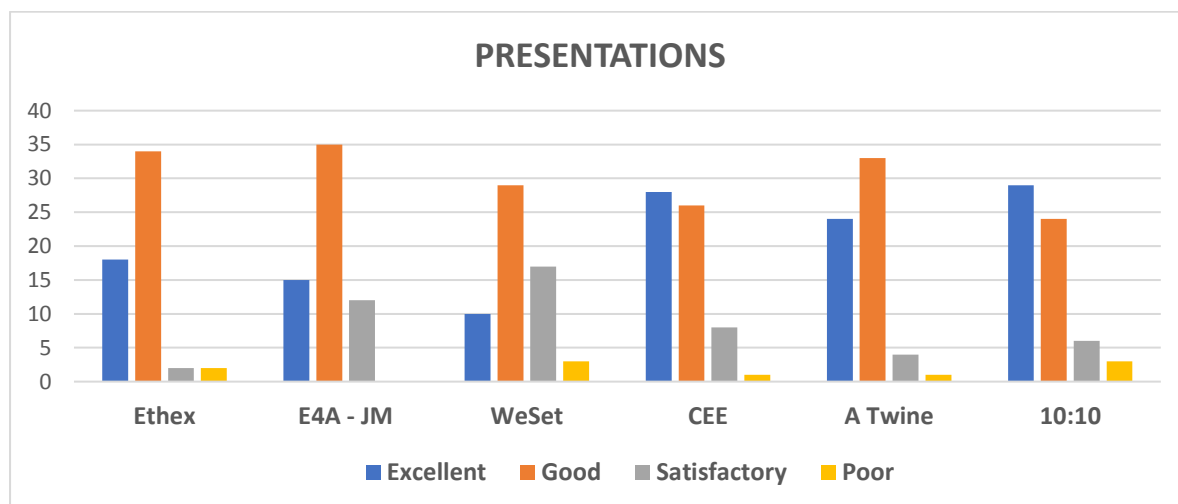
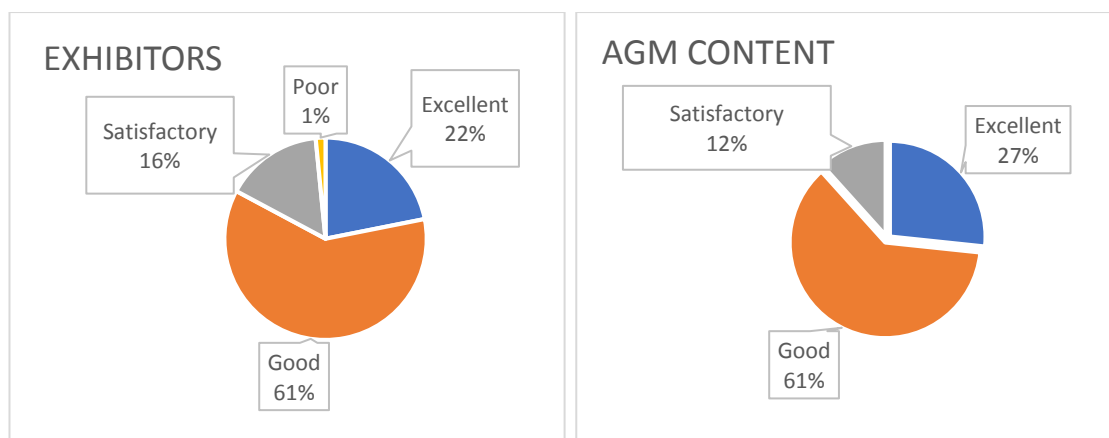


Chart 4



Overall the AGM feedback was positive. Going forward it would be beneficial to locate a venue in the same area but with more suitable facilities (such as stage, seating, hearing loop), clear introductions of speakers and exhibitors and also to consider timings for speakers and clear outlines for slide content suitable for our members (fewer technical terms and clear font size).