

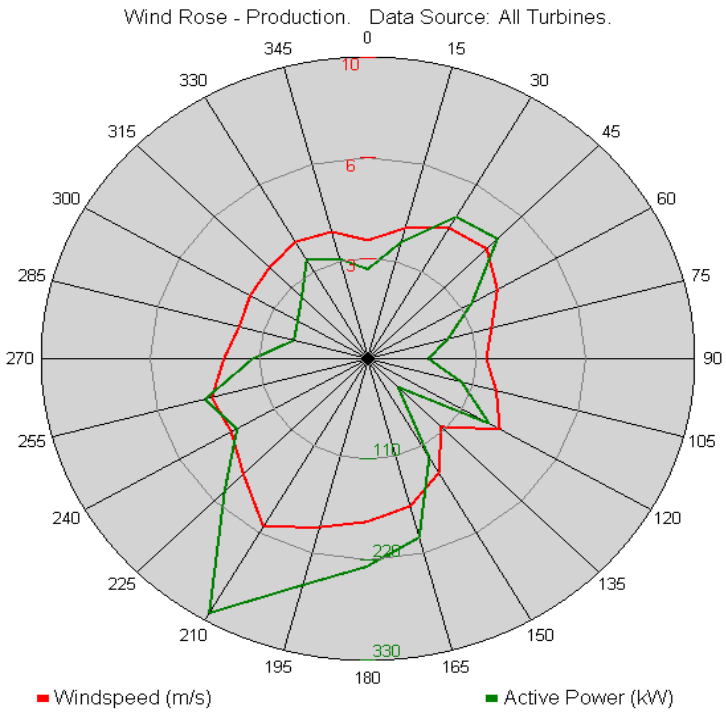
WESTMILL YEAR TO DATE PRODUCTION

2009/2010						
PRODUCTION PER TURBINE						
	T1	T2	T3	T4	T5	Total
Nov-09	403,667	400,977	402,959	384,453	395,460	1,987,516
Dec-09	221,673	206,096	215,848	206,667	197,014	1,047,298
Jan-10	152,817	145,568	139,318	138,237	140,178	716,118
Feb-10	145,186	131,781	123,365	119,289	133,423	653,044
Mar-10	198,713	190,053	182,268	191,890	191,271	954,195
Apr-10	138,237	134,918	130,899	123,765	131,205	659,024
May-10	81,954	78,920	87,635	76,288	76,049	400,846
Jun-10	58,540	57,829	57,443	52,581	56,967	283,360
Jul-10	137,378	131,443	134,169	125,559	122,582	651,131
Aug-10	151,329	137,275	140,420	134,703	139,452	703,179
Sep-10	143,812	145,700	143,105	140,859	152,547	726,023
Oct-10	183,385	182,362	176,009	171,396	176,063	889,215
Total	2,016,691	1,942,922	1,933,438	1,865,687	1,912,211	9,670,949
%	20.9%	20.1%	20.0%	19.3%	19.8%	100.0%

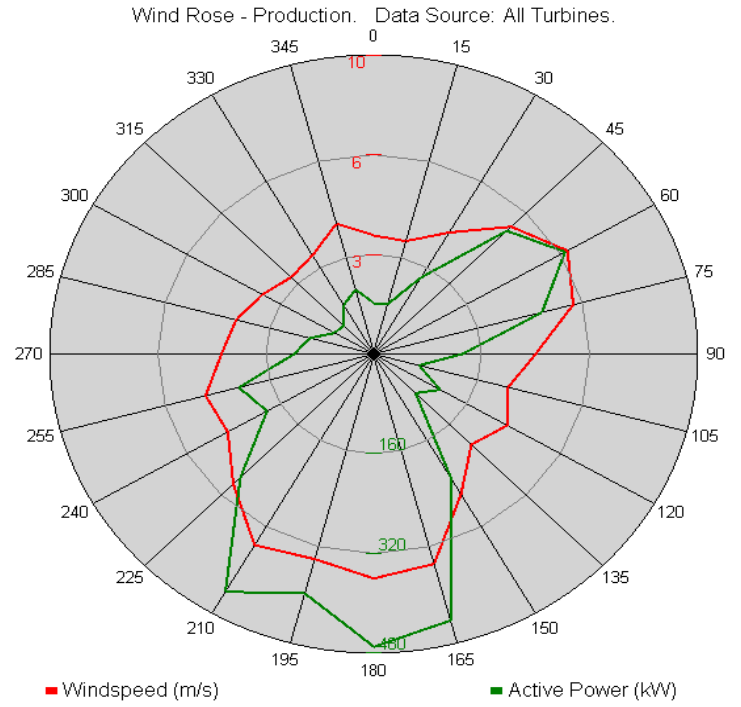
	YTD				Cumulative			Capacity	Availability
	2009/2010				2009/2010			2009/2010	
	Actual	Budget	Variance	Line Loss	Actual	Budget	Variance		
Nov-09	1,938,119	1,113,177	74%	2%	1,938,119	1,113,177	74%	41.5%	98.1%
Dec-09	1,010,235	1,246,274	-19%	4%	2,948,354	2,359,451	25%	21.2%	97.4%
Jan-10	683,190	1,355,172	-49.6%	5%	3,631,544	3,714,623	-2.2%	14.5%	96.2%
Feb-10	622,215	1,234,187	-49.6%	5%	4,253,759	4,948,810	-14.0%	14.6%	96.4%
Mar-10	915,735	1,197,875	-23.6%	4%	5,169,494	6,146,685	-15.9%	19.3%	96.0%
Apr-10	637,085	943,781	-32.5%	3%	5,806,579	7,090,466	-18.1%	13.8%	95.4%
May-10	380,665	846,983	-55.1%	5%	6,187,244	7,937,448	-22.0%	8.1%	97.8%
Jun-10	268,615	750,185	-64.2%	5%	6,455,859	8,687,633	-25.7%	5.9%	98.2%
Jul-10	619,750	701,786	-11.7%	5%	7,075,609	9,389,418	-24.6%	13.2%	98.6%
Aug-10	671,210	725,985	-7.5%	5%	7,746,819	10,115,403	-23.4%	14.2%	99.8%
Sep-10	694,335	859,070	-19.2%	4%	8,441,154	10,974,473	-23.1%	15.2%	99.3%
Oct-10	853,350	1,125,277	-24.2%	4%	9,294,504	12,099,750	-23.2%	18.0%	97.4%
TOTAL	9,294,504	12,099,750		4.23%				16.6%	97.6%

estimated figure

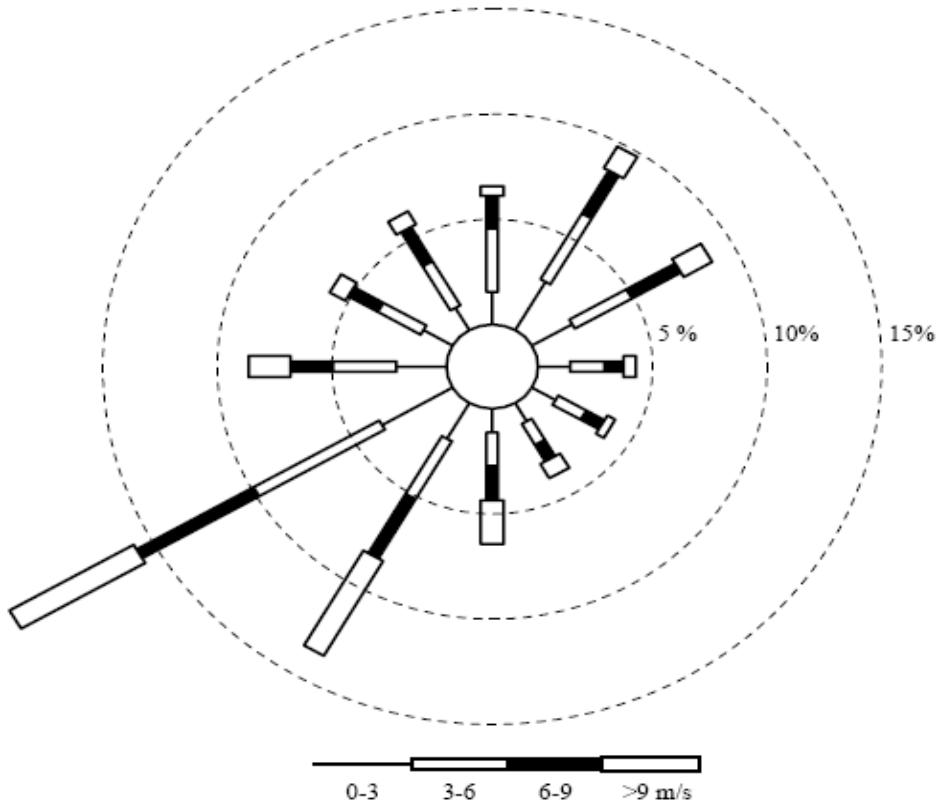
Wind Rose



YTD Wind Rose (from Nov 2009)



1 - 31st October 2010 Wind Rose



Predicted wind rose per Garrad Hassan Report ~ 30m height